



LLY40-2/05




The Moorings®
PRIVATE SALES
www.leopardcatamarans.com

Renderings Bob Source, Design Neil Blackburn



LE PARD 40
The Most Natural Choice Of Cats

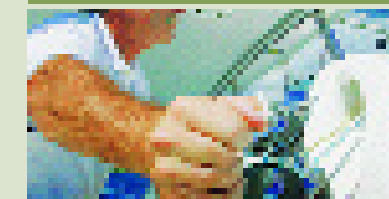
introducing



EXTERIOR



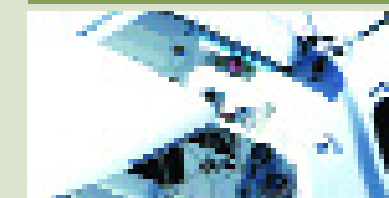
BRIDGE DECK



INTERIOR



UNIQUE FEATURES



■ The Leopard range of blue-water cruising catamarans has added to the pride with the introduction of the innovative Leopard 40.

■ Performance, comfort and a focus on outdoor living are the leading features of this new model, built by Robertson and Caine and designed by Morrelli and Melvin, architects of high performance cats.

■ Built using the latest technology and materials, the Leopard 40 integrates an open-plan layout with exceptional interior volume, offering a comfortable cruising cat that combines excellent load carrying capacity with superior performance levels.

■ In addition, an intelligent deck plan with all sail controls led back to the helm, results in a cat that is extremely easy to sail, even with a limited crew.



■ The deck layout is clear and uncluttered, with walk-through access to the aft swim platform, wide side decks and the mainsail and jib controls all led aft to the helm station, for ease of handling.

■ The large cockpit with outside dining area is protected by a functional hard-top bimini fitted as standard, facilitating access to the mast and boom. A stack pack system, double purchase halyards, mast track and slide system make handling the fully battened mainsail surprisingly easy.

■ Large, sleek windows along the coachroof sides add to the elegant look of the deck and give the interior a light, voluminous feel with 360° visibility.

■ Louver steps from the foredeck to the coachroof provide shade in the saloon and surefooted access to the mast winches.





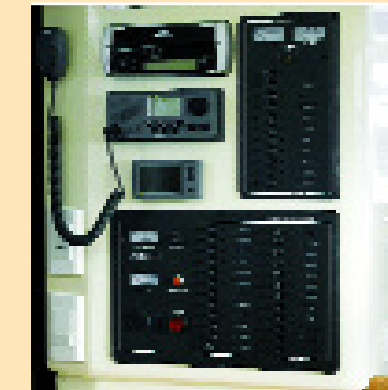
- Available in 3 or 4-cabin layouts, the Leopard 40's galley-up design incorporates a spacious saloon area with an L-shaped settee and an aft-facing galley with plenty of room to circulate. A softly curved Corian cocktail bar overlooks the adjoining cockpit area, enabling drinks and hors d'oeuvres to be served directly in the cockpit.

- For dining, you'll appreciate the ergonomic galley layout featuring soft curves and heat-resistant Corian countertops. Fully equipped, the compact galley features a stove with oven and broiler and a double sink with mixer tap and ample counter and cabinet space. Two overhead hatches and an opening port forward provide excellent ventilation.

- Catering for a larger party is no problem, with standard appliances including a large refrigerator-freezer to port, with well-insulated compartments and stylish, front-opening stainless steel doors. The electrical panel, CD stereo and navigation instruments are positioned above the refrigerator which can also serve as the chart table.

- The upgraded instrumentation panel houses switches for diverse equipment for including CD/radio stereo system, VHF, shore power, 12V and AC outlets.

- The companionway to the owner's suite is to starboard and can be closed off with a folding door and sliding beech wood cover for extra privacy when desired (3-cabin layout).





■ Soft overhead lighting, quality upholstery and light beech wood finishes give a bright and airy feel to the Leopard 40 interior. High quality Corian surfaces and harmonious ultra suede or faux leather fabrics are used throughout. Several interior color options are available.

■ Large windows provide panoramic views and allow natural light to flood in. Electric fans and opening hatches add to the comfort of this important living area.





■ In the 3-cabin layout, there are two guest cabins in the port hull, while the starboard hull is entirely dedicated to the owner, with a large private cabin, study area and large bathroom forward, with attractive beech finishing throughout.

■ Located aft, the master state-room features a large double berth, book shelf, reading lights and electric fans, a tall hanging locker and plentiful shelving for clothing and personal items, all in attractive beech finish. Two opening hatches and two opening ports allow excellent ventilation and luminosity.



■ The owner's shower room and head are located forward in the starboard hull while a spacious head serves the two guest cabins to port. Amenities include a Corian washbasin with mixer tap, large separate shower stall, shaver outlet, mirrored vanity unit and oversized marine toilet.

■ The 3 cabin layout incorporates a separate study area with swivel stool seating. The desk has 110V outlets, document storage, reading light, overhead cabinet and dedicated locker with shelf opposite.

■ Each guest cabin has been thought out with practicality and comfort as a premium. Well ventilated with opening hatch and ports, there is plenty of storage and excellent lighting, with adjustable reading lights, electric fans and full size hanging lockers with shelving. The forward guest cabin also features an additional berth or storage area in the forepeak.



unique features

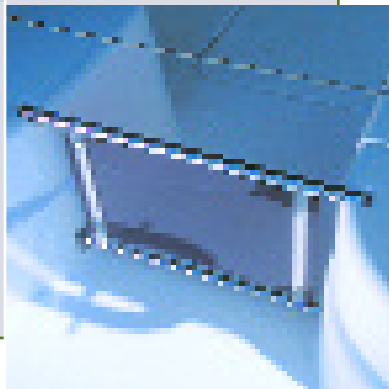
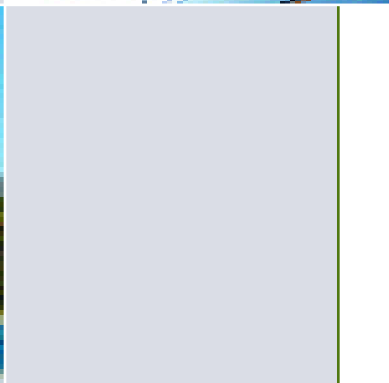
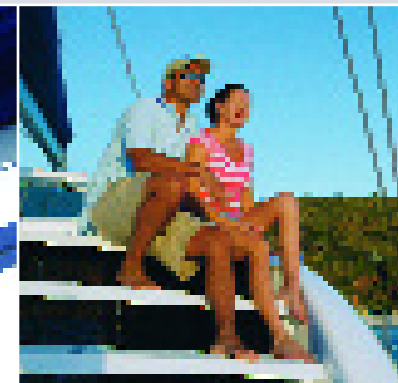
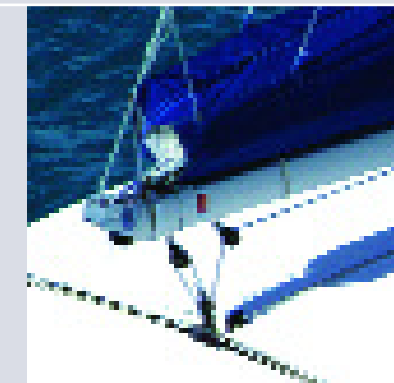
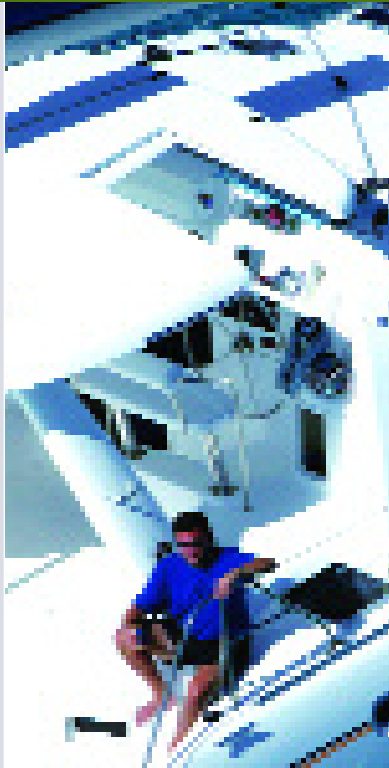


■ The navigation instruments are all located at the steering console and oversized Lewmar winches for main and jib sheet handling are within easy reach of the double helmsman's seat, which can be adjusted to provide additional seats in the cockpit.

■ The mainsheet traveler is positioned overhead on the trademark 'targa' arch at the aft end of the cockpit providing a permanent support for the bimini and allowing safe and easy walk-through access from the cockpit to the aft platform, great for swimming, diving or boarding a dinghy.

■ Unique to the Leopard 40 is the innovative stepped hull design which increases volume while minimizing the wetted hull surface, giving exceptional load carrying capacity and ensuring maximal performance.

■ Gated access to the aft deck from the cockpit ensures the safety of young children.



LEOPARD 40 STANDARD SPECIFICATIONS

Length overall	39 ft 3 in	11.97 M
Waterline length	37 ft 6 in	11.43 M
Beam	20 ft 1 in	6.13 M
Draft	3 ft 10 in	1.18 M
Displacement	16,820 lbs	7,630 Kg
Mast height	61 ft 11 in	18.86 M
Fuel capacity	92 US gal	350 L
Water capacity	206 US gal	780 L
Engines	volvo 19 HP x 2	
Sail area	1,030 ² ft	96 ² M

■ The Leopard 40 contains all the top features sailors desire, including blue water capability, great performance, solid construction, a superb anchoring system, excellent ventilation, high quality equipment, large tank capacities standard, a standard hard top, and offers excellent value for money.

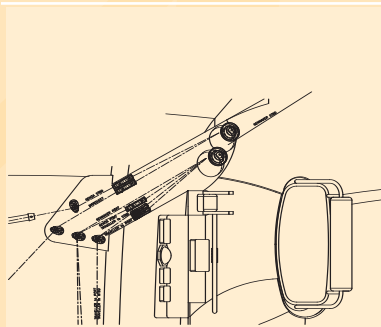
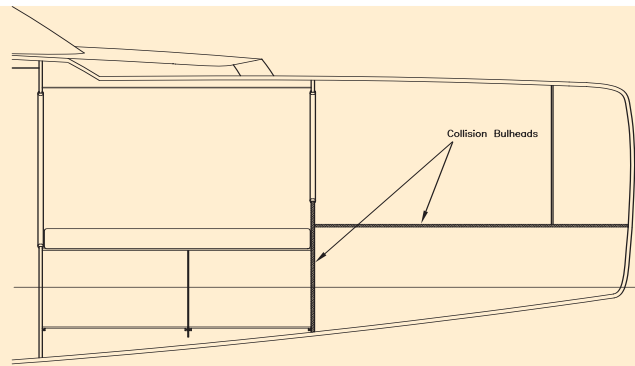
■ Robertson and Caine use the most advanced composite GRP sandwich construction incorporating a vacuum bonded balsa core, providing high compression and impact resistance. E glass stitched fabric ensures maximum strength, a no crimp factor and ensures a very good resin to glass ratio.

■ The hull joints are solid fiberglass. The hull deck joint is bonded and through bolted, with additional glass at strategic stress points to ensure maximum strength. Bulkheads are bonded to the hull.

■ Isophthalic gelcoat and resin rich tissue improves resistance to hydrolysis and helps prevent osmosis. The hull laminate is light and durable resulting in a dynamic weight carrying capacity and excellent motion reaction of the hull, yet is also strong for sailing ease of mind.

■ Equipped with bimini, anchors, sails and complete electronics package including VHF, chart plotter/GPS, autopilot and radio/CD, the Leopard 43 also comes with two Yanmar 40Hp engines, giving great performance under power as well as sail.

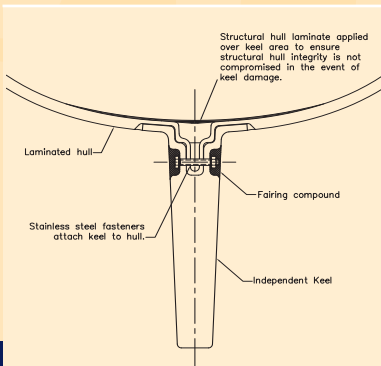
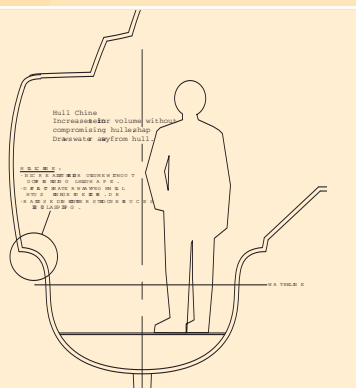
The collision bulkheads limit water intrusion in case of damage to the bows.



Helm Station:

- Centralized sail control next to helm position, allows for single handed operation.
- Huge rope storage compartment keeps deck clear of rope clutter.
- Raised helm position allows panoramic view which can be enhanced by opening the sliding hatch in the hardtop bimini
- Helm seat can accommodate two crew

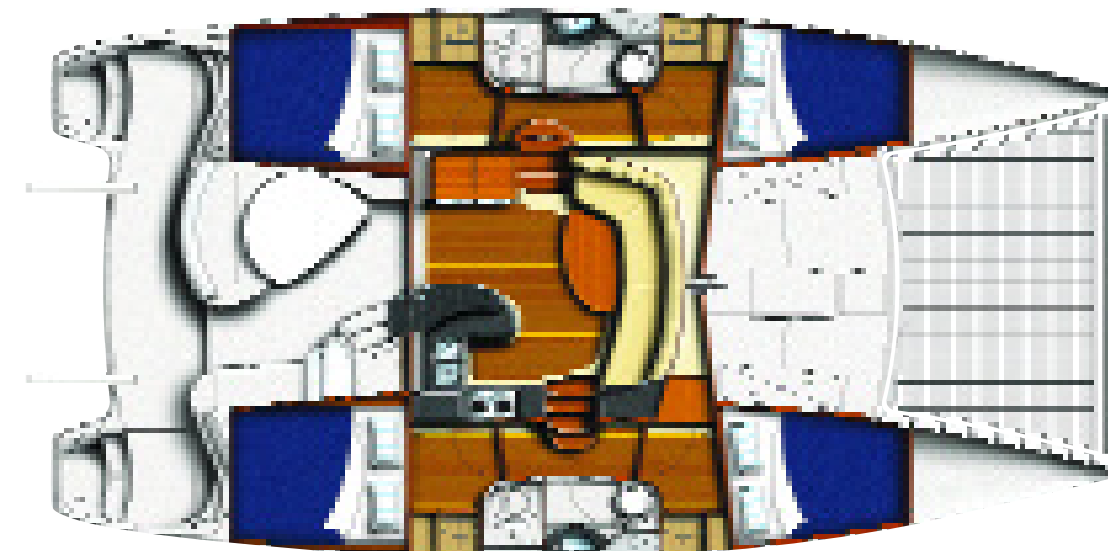
Awaiting confirmation on copy for the area. Awaiting confirmation on copy for the area. Awaiting confirmation on copy for the area. Awaiting confirmation on copy for the area.



The keels are designed as replacement units to ensure structural hull integrity is not compromised in the event of keel damage



THREE CABIN LAYOUT



FOUR CABIN LAYOUT

